



MU-IM170-PRO WEATHER STATION



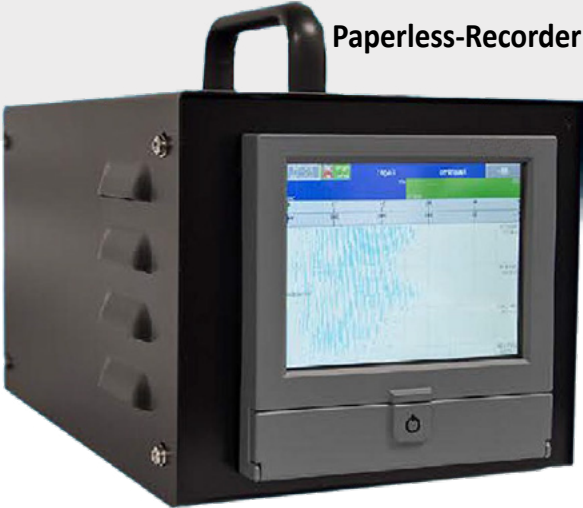
Data-Logger

PC Software:
 Powerful and versatile software allow the user to view and analyse data from the sensors. Configuration of the PR is also possible.
 Key features: Live data monitoring (includes trending, with scalable time axis between 1 minute and 1 month). Historical review of data.
 Customizable display screens: Configure the PR to display data in your chosen format. Choose from a variety of different display styles.
 Configure alarms and relay outputs.
 Download data for analysis offline.
 Configuration wizards for easy set-up and troubleshooting .

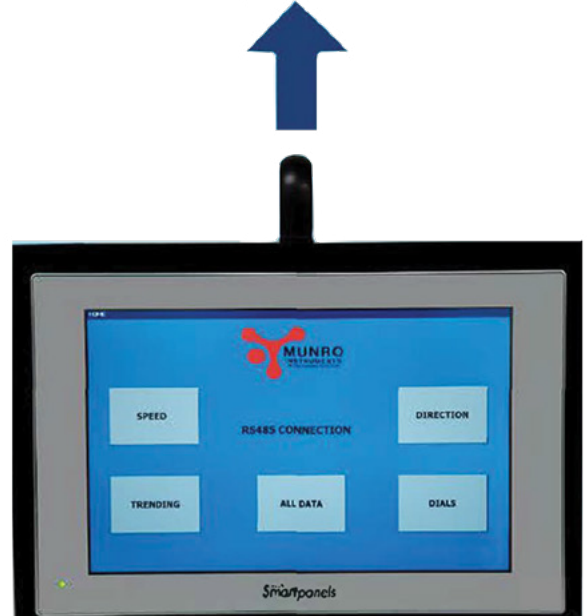
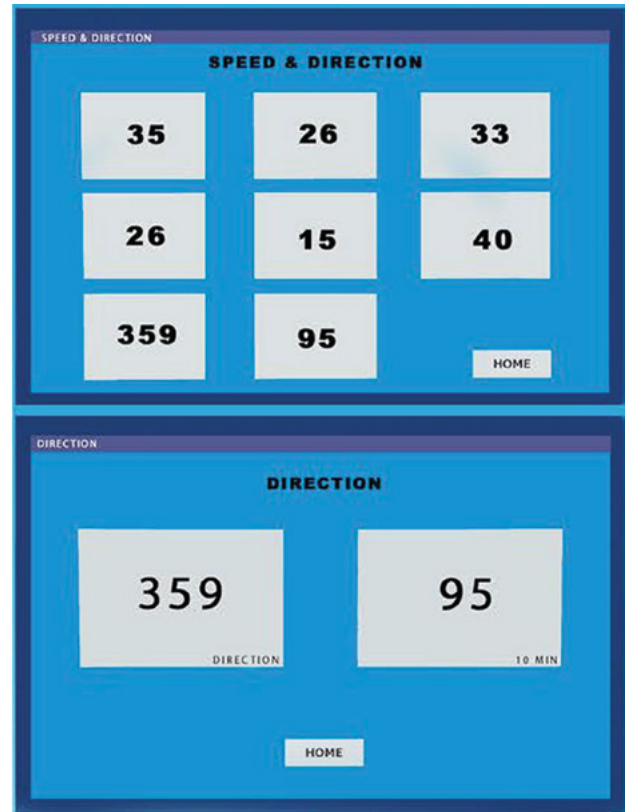
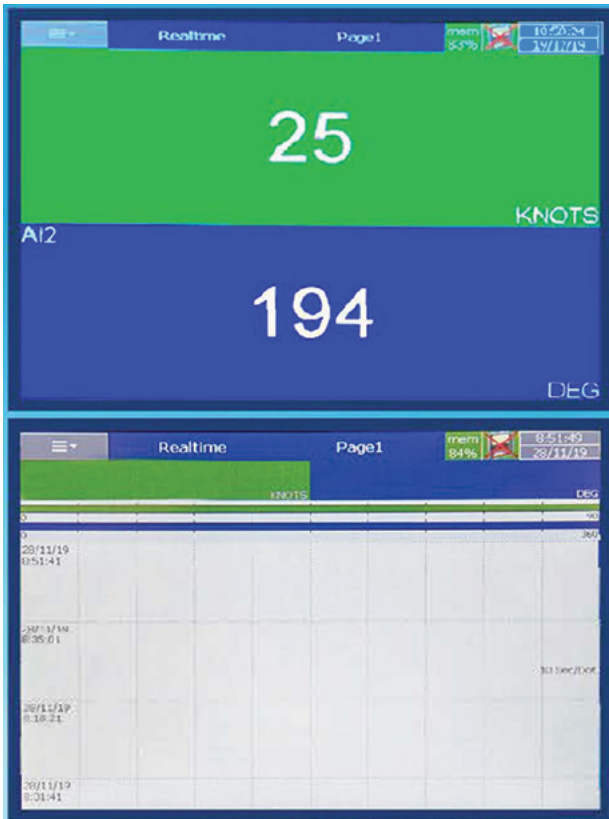
Wind & speed Direction

Paperless recorder:
 The Paperless Recorder (PR) is a data acquisition unit with a 5.6" TFT touch screen. It is designed for use with our range of meteorological sensors.
 The PR offers multiple real-time & historical views, as well as numerous archiving strategies to ensure data is never lost. Using the associated PC software, the user can view live data, generate reports, set alarms and configure the PR unit.

Paperless-Recorder



MU-IM170-PRO



Technical Specifications

Power	90-250VAC or 11-36VDC
Display	5.6" TFT touch screen
Resolution	640x480 pixel resolution, 65K colour
Internal Memory / RAM	256 MB
External Memory	SD card, USB x 2
Ethernet	Mod bus TCP/IP
Sampling Rate	100 ms max.
Maths Channels	Yes
Protection	IP65 front, IP20 rear
Operating Temperature	0°C to 50°C